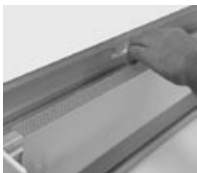




The hinged door panel holds open for easy cleaning & relamping.



The top & bottom lenses, as well as the divider panel, remove easily without tools.



The unitized ballast assembly that houses all electrical components is easy to remove thanks to keyhole slots & a quick-disconnect plug.



Vista's optional QX20 quartz exam light attaches to the Brighton providing high-intensity, color-corrected illumination.

Specifications

Construction

- Chassis, ballast tray and door panel are extruded, anodized aluminum.
- High-reflectance divider.
- Full-length lens support channels.
- Die cast aluminum end caps.
- Replaceable slide-in decor panel on front door.
- UL & CUL Listed.

Lenses

- Prismatic acrylic top lens.
- Aluminum lens trim to prevent top lens sagging.
- Acri-Tuf high impact bottom lens.

Lamps

- T8 or T5 lamps Included.

Ballast Tray Assembly

- Quick-disconnect allows easy one person maintenance.
- Ballasts mounted with lampholders on the removable ballast assembly for easy service.

Switching

- Standard location is center of fixture.
- ON/OFF or 3-way pull chain for one circuit control.
- Four-position sequential switch for uplight and downlight.
- ON/OFF rocker for downlight only.
- Optional solid state Low-Voltage Controller (LVC).*

Finish

- Mission White end caps. Custom colors available.
- All other aluminum parts are clear-anodized.
- Standard decor colors listed on reverse. Custom colors available.

Antimicrobial

- Agion® antimicrobial protection
- Protects against bacteria colonization
- Non-organic silver technology

Warranty

- 15 Year standard Vista warranty

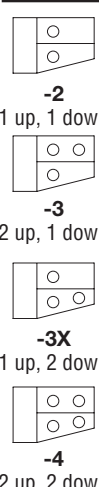
* Optional solid-state low-voltage controller to accommodate switching through nurse call handset by others, or a pillow switch by VISTA.

Specifier's Reference

Project Name	Type
Catalog No.	
Comments	

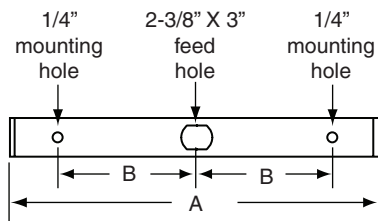


Ordering Information

Series	Lamp Configuration	Switching	Lamps & Ballasts	Voltage	Options	Finish
Ag62 Nominal 2 ft. fixture length Ag63 Nominal 3 ft. fixture length Ag64 Nominal 4 ft. fixture length	 <p>-2 1 up, 1 down</p> <p>-3 2 up, 1 down</p> <p>-3X 1 up, 2 down</p> <p>-4 2 up, 2 down</p>	<p>Specify: L (Left) R (Right) C (Center)</p> <p>-2 (L, R or C) On/Off pull chain with breakaway pull cord for downlight only</p> <p>-3 (L, R or C) 3-way pull chain with breakaway pull cord for downlight only (not available with 277V)</p> <p>-4 (L, R or C) 4-position pull chain with breakaway pull cord</p> <p>-R (L, R or C) On/Off rocker</p> <p>-Z No switch</p> <p>-LVC Solid state Low-Voltage Controller (LVC) for patient control of either or both circuits through remote momentary contact switch or nurse call handset by others</p> <p>-PS2 Pillow switch with momentary contact switch for control of downlight only (includes LVC)</p> <p>-PS4 Pillow switch with single pole double throw momentary contact switch for control of both up and downlight (includes LVC)</p> <p>-MCS/2 (L, R or C) On/off momentary contact rocker switch on bedlight for staff control of one circuit where patient is using a pillow switch or a nurse call handset (use in conjunction with pillow switch or LVC)</p> <p>-MCS/4 (L, R or C) Same as MCS2 but to control two circuits</p>	<p>-T8EL -T8MAG -T5EL (Not available in high output)</p>	<p>-UNV Universal voltage ballasts -347V</p>	<p>Specify: L (Left) R (Right)</p> <p>-A ACRI-TUF top lens</p> <p>-NLF (L or R) 5-watt PL Fluorescent nightlight</p> <p>-RNLF (L or R) 5-watt PL Fluorescent night-light with rocker switch</p> <p>-CO (L or R)++ Grounded convenience outlet, fixture bottom</p> <p>-DXHD(L or R)++ Red hospital-grade duplex receptacle installed in end cap</p> <p>-DXHV(L or R)++ Ivory hospital-grade duplex receptacle installed in end cap</p> <p>-MP Top plate in place of lens for downlight only</p> <p>-RIF Radio-frequency interference suppressor (1 per circuit)</p> <p>-FH GLR fuse and HLR holder set (1 per ballast)</p>	<p>-X Custom specified color</p> <p>-MW Mission White</p> <p>-AN Antique White</p> <p>-GO Golden Oak</p> <p>-CH Cherry</p>

++No more than one duplex or two single outlets may be supplied per fixture

Mounting & Dimensions



Nominal Length	A		B	
	in	mm	in	mm
2'	27-1/2	699	8-5/8	219
3'	39-1/2	1003	14-5/8	372
4'	51-1/2	1308	20-5/8	524

