

AZ-81/82 EXAM

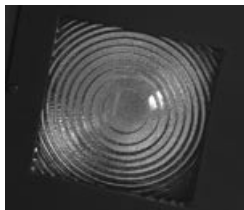
Recessed Ceiling Mounted Exam Lights



AZ-81



AZ-82



Tempered fresnel focusing lens.



Quick access to porcelain socket for easy relamping.



Neoprene sponge gasket around door edges.



1-15 Minute Timer Optional

Specifications

AZ-81

- 20-gauge, cold-rolled steel housing, white powder coated.
- Full-length piano hinged internal access door with tempered fresnel focusing Lens and captive thumb screw.
- Glare-reducing black matte enamel in the aperture recess.
- Uses one Q250 CL/MC tungsten-halogen, 2000-hour, T-4 (lamp by others).
- Ellipsoidal aluminum reflector with high reflectance finish.
- 250W quartz porcelain socket, 120V only.
- Ceiling Recessed, hands-free examination lighting
- 7/8" diameter knockouts for electrical connection.
- Optional plaster frame & hanger assembly .
- Optional 1-15 minute timer available.

AZ-82

- 20-gauge, cold-rolled steel housing, white powder coated
- Internal access door with continuous piano hinge, tempered fresnel focusing Lens and captive thumb screw.
- Uses one Q250 CL/MC tungsten-halogen, 2000-hour, T-4 (lamp by others)
- Ellipsoidal aluminum reflector with high reflectance finish.
- 250W quartz porcelain socket, 120V only
- Ceiling Recessed, hands-free examination lighting
- 7/8" diameter knockouts for electrical connection
- Optional plaster frame & hanger assembly .
- Optional 1-15 minute timer available.

Specifier's Reference

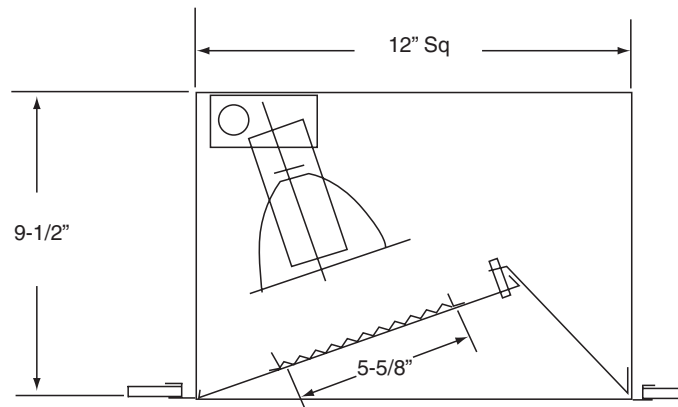
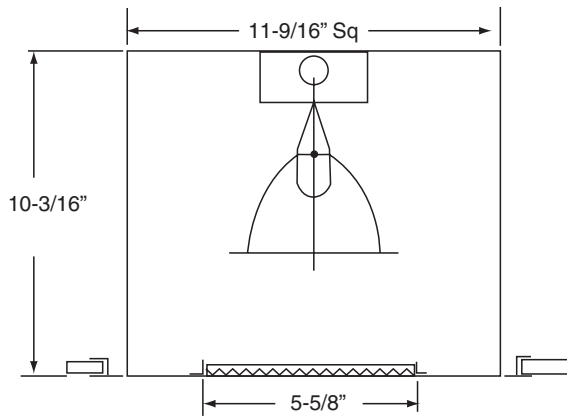
Project Name	Type
Catalog No.	
Comments	



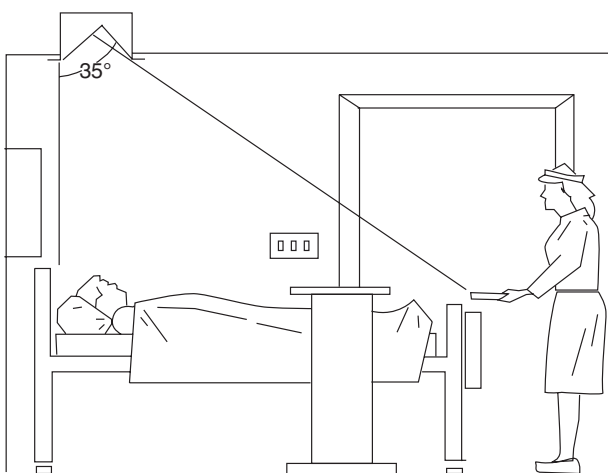
Ordering Information

Series	Options
<div style="border: 1px solid black; width: 100px; height: 20px; margin: 0 auto;"></div> <p>AZ-81 Asymmetrical Quartz Exam Light</p>	<div style="border: 1px solid black; width: 100px; height: 20px; margin: 0 auto;"></div> <p>-PF Plaster Frame -Timer 1-15 Minute Wall-mounted Timer</p>
<p>AZ-82 Symmetrical Quartz Exam Light</p>	

Mounting & Dimensions



Photometrics



AZ-81 180 footcandles over bed (8ft. ceiling)



AZ-82 200 footcandles over bed (8ft. ceiling)