

MULTI-MEDIA SURGICAL TROFFER

2900 Series Sealed Troffer for Minimally Invasive Surgical Rooms



Minimally Invasive Surgery

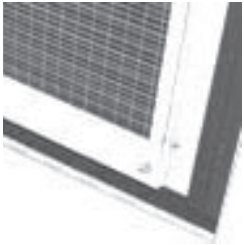
The green lights reduce glare for comfortable viewing of monitors during MIS procedures.



Specifications



Drop Down Door... allows easy access to lamps and ballasts and greater environmental control.



Closed Cell Gasketing in conjunction with the AgION™ Antimicrobial protection eliminates the "breeding ground incubator" associated with conventional fixtures.

Construction: 20 GA die formed steel housing with welded seams. Universal housing for flange or 1" or 1-1/2" grid ceilings.

Door: 20 GA cold rolled steel drop down door and lens retaining angles. Optional 18 GA stainless steel door provided only when specified.

Latches: Captive phillips head screws with cage nuts.

Shielding: Asymmetric acrylic lens with 3/8" silver based grid pattern and grounding strip engineered for and tested with this unit to control radiated electromagnetic interference.

Gasketing: Closed cell neoprene gasket above inner door edges and around perimeter of housing flange.

RIF Suppressor: One RIF suppressor per circuit. These suppressors are designed specifically for use with electronic ballasts and control conducted electromagnetic interference.

Finish: All metal components pretreated and finished with white powder coating 90% reflectance. Optional stainless steel door and hinge available.

Electrical: T8 electronic ballasts standard. Low Voltage Controller(s) available for low voltage control systems. Battery pack option available for transfer to generator backup circuit. Optional Dali dimming ballasts allow surgeons to program customized light levels for both the white and the green lamps. Use any Dali protocol control system, by others, such as touch screen control or a hand-held remote. Contact factory for further information.

Lamps: Unit designed for white or green T8 32W lamps. Green phosphor lamps provide full lumen output equivalent to standard white fluorescents.

Mounting: Universal housing for 1" or 1-1/2" grid ceilings or for plaster or dry wall ceilings. Units to be secured above plenum with cable, rod or chain by others. Grid: inverted T-Grid ceiling system by others. Flange: Two 14 GA galvanized cross mounting yokes provided. Optional 3/4" deep 14 GA galvanized plaster frame angle, field assembled, supplied only when specified.

Antimicrobial: Agion™ Antimicrobial protection using silver technology inhibits bacterial colonization on metal interior and exterior surfaces. Agion™ antimicrobial FDA recognized and EPA registered, meeting all applicable EPA standards.

Compliance: ETL (U.S./Canada) & NSF, Mil Std 461E, FCC Part 18. Sealed and gasketed.

Specifier's Reference

Project Name	Type
Catalog No.	
Comments	



MULTI-MEDIA SURGICAL TROFFER

2900 Series Sealed Troffer for Minimally Invasive Surgical Rooms

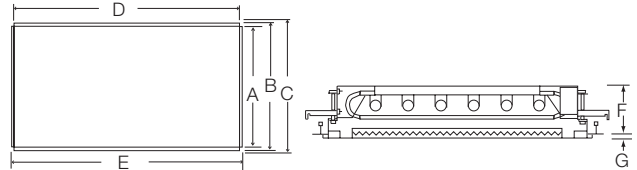
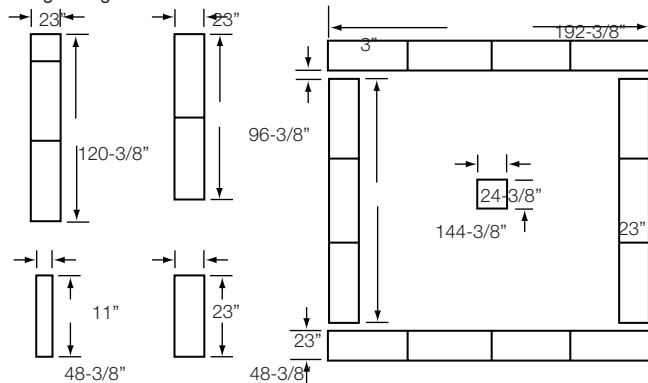


Ordering Information

SERIES	LAMPS	MOUNTING STYLE	BALLAST	VOLTAGE	LENS	OPTIONS
Ag2924 2X4 Sealed Surgical Troffer with 41K 32W lamps & 1 RIF suppressor per circuit supplied	-2/4 2 Green & 4 White Lamps (In 2X4 or 2X2 models only)	-R Recessed Mounted For 1" or 1-1/2" lay-in grid ceiling or dry-wall ceilings	-T8EL	-UNV -120V -277V	-A Asymmetrical -S Symmetrical	-EMP1+ Emergency power pack for 1 circuit, 1 lamp -EMP2+ Emergency power pack for 1 circuit, 2 lamps -GEN1+ Single lamp 5-minute interim battery backup -GMF GMF slow blow fuse and fuse holder -SD Stainless steel door frame -FH GLR fuse and HLR holder set -THD 10% THD ballast -PF Plaster frame -LVC Low Voltage Controller for one or two circuits to use with low voltage control system by others -HD Hinged Door
Ag2914 1X4 Sealed Surgical Troffer with 41K 32W lamps & 1 RIF suppressor per circuit supplied	-2/2 2 Green & 2 White Lamps					
Ag2922 2X2 Sealed Surgical Troffer with 41K 32W lamps & 1 RIF suppressor per circuit supplied	-1/2 1 Green & 2 White Lamps					
	-1/1 1 Green & 1 White Lamp (In 1x4 models only)					
	-1/1 1 Green & 1 White Lamp (In 1x4 models only)					
	-1/1 1 Green & 1 White Lamp (In 1x4 models only)					
	* NOTE: 550NM green lamps provided by Vista.					

Mounting & Dimensions

Flange Rough-in Dimensions



- A HOUSING LESS FLANGE
- B WIDTH HOUSING & FLANGE
- C INVERTED T-GRID
- D HOUSING LENGTH
- E HOUSING & FLANGE LENGTH
- F HOUSING DEPTH
- G LENS HOUSING DEPTH

	A	B	C	D	E	F	G
2X4	22-3/4"	23-3/4"	24"	48"	49"		
2X2	22-3/4"	23-3/4"	24"	24"	25"	4-1/2"	5/16"
1X4	10-3/4"	11-3/4"	12"	48"	49"		

Photometrics

Catalog #Ag2924-2/4-6-R
 Luminaire Efficiency: 74.8%
 Lamps: 6 - FO32/T8/735
 Input Wattage: 192 Watts
 Ballast Type: Electronic
 Ballast Factor: 1.0

Floor Ceilings	80%						20%					
	70	50	30	10	70	50	30	10	50	30	10	
Walls(%)	0	89	89	89	89	87	87	87	83	83	83	
	1	83	80	77	75	81	78	75	73	75	73	
	2	76	71	67	63	74	70	66	62	67	64	
	3	70	64	58	54	69	62	58	54	60	56	
	4	65	57	52	47	64	56	51	47	55	50	
	5	60	52	46	41	59	51	45	41	50	45	
	6	56	47	41	37	55	46	41	37	45	40	
	7	52	43	37	33	51	43	37	33	41	36	
	8	49	40	34	30	48	39	34	30	38	33	
	9	46	37	31	27	45	36	31	27	35	30	
	10	43	34	28	25	42	33	28	25	33	28	

